

Walking through Time



Start Screen

After successful login the user finds himself in the modern time view. On first access the user is asked to allow the application the usage of his geolocation. If the coordinates are available, a blue dot will mark the user's position on the map. Otherwise the starting point defaults to EDINA.

Besides the map the start screen provides a control bar containing the following buttons:

- 1 - Re-centres the user position on the map
- 2 - The "follow me button" is a toggle button to enable/disable periodic user position polling. Hence the map is continually re-centered. this feature is turned off, as default.
- 3 - Opens the map menu
- 4 - Opens the routes and markers menu
- 5 - Toggles the transparency of historical maps so that the underlying Google map is visible
- 6 - Opens the create marker form



Map Menu

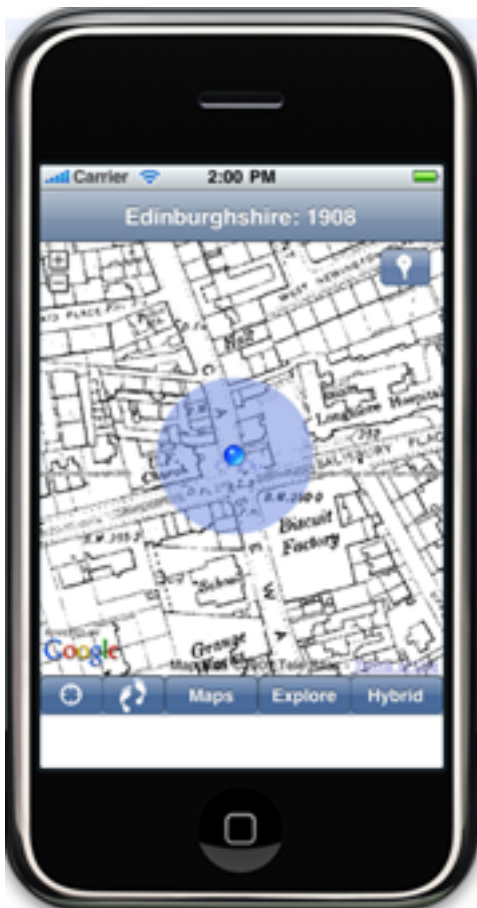
Clicking the Maps button opens a menu listing available map sets.

The Map button takes the user back to the previous map view



Map Menu

After selecting a map set all available map layers (each layer corresponding to a particular time period) are listed.



Historic Map View

Once a map layer has been selected the user is taken back to the map view, now showing the selected historic map.



Explore Menu

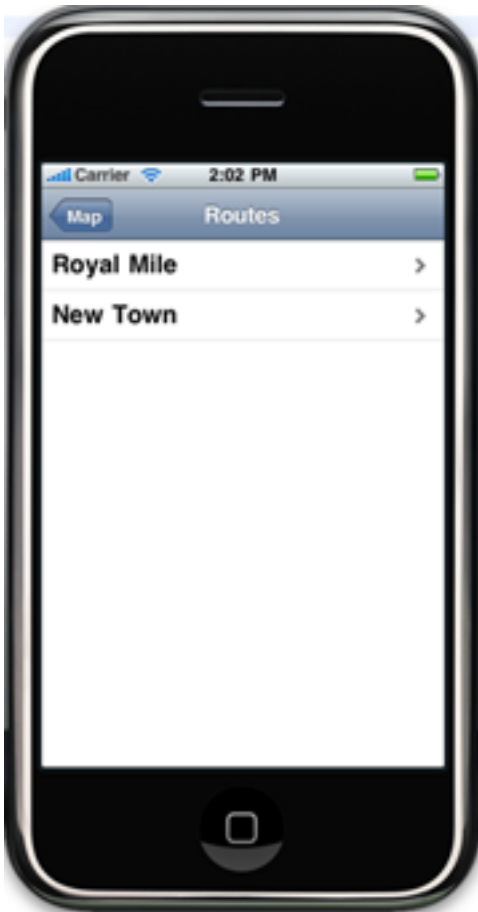
Clicking the Explore button lets users choose between overlaying maps with markers or routes.



Markers

Markers mark places of interest. There are three types of markers distinguishable in colour: Permanent markers are blue, other user's markers are green and one's own markers are purple.

Clicking on a marker opens a window containing a marker title, a time period (e.g. when a marked building has been built), and possibly an image and/or additional information.



Routes

If the user chooses to explore routes, all available routes are listed.



Route View

The selected route is displayed on the map. The starting point (first marker) of the route is centred.



Hybrid View

The Hybrid button toggles the historic map's transparency. If turned on the modern time as well as the historic map are visible simultaneously.



Create Marker Form

Users can mark their current position. Markers need to have a title. Additionally a description, an image URL (URL pointing to an image displaying the place of interest) as well as a time period can optionally be added.

(Time periods provide the possibility to indicate when the described place of interest was e.g. built, demolished etc.)